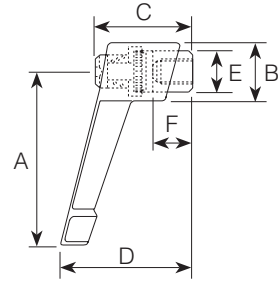


Cast Zinc



Cast Zinc

MALE								FEMALE	
Plated Steel Insert Part No.	A	B	C	D	E	Thread	M Thread Length	F Thread Depth	Plated Steel Insert Part No.
		42	14	24.5	33.5	M4	10	8	LZ42M4
		42	14	24.5	33.5	M5	10	8	LZ42M5
LZ42M6X20	42	14	24.5	33.5	10	M6	20	8	LZ42M6
LZ42M6X32	42	14	24.5	33.5	10	M6	32		
LZ42M6X50	42	14	24.5	33.5	10	M6	50		
	65	18	31	45.5	13.5	M6		10	LZ65M6
LZ65M8X25	65	18	31	45.5	13.5	M8	25	10	LZ65M8
LZ65M8X40	65	18	31	45.5	13.5	M8	40		
	78	22	36	54	16	M8		14	LZ78M8
LZ78M10X32	78	22	36	54	16	M10	32	14	LZ78M10
LZ78M10X50	78	22	36	54	16	M10	50		
LZ92M10X32	92	25	43	64	19	M10	32	17	LZ92M10
LZ92M10X50	92	25	43	64	19	M10	50		
LZ92M12X32	92	25	43	64	19	M12	32	17	LZ92M12