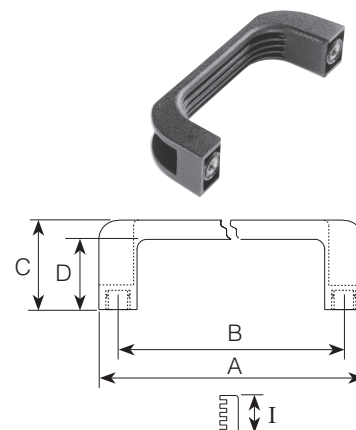


**Thermoplastic  
Through Hole**



**Thermoplastic**

<b>FEMALE</b>											<b>FEMALE</b>	
Plain Through Hole Part No.	A	B	C	D	E	F	G Dia	H Dia	I	Thread	F Thread Depth	Brass Insert Part No.
LT110X6.5	110	94	37	29	13	7	11	6.5	21			
	110	94	37	29					21	M5	8	LT110M5B
LT139X6.5	139	120	40	30	15.5	7	14	6.5	24			
	139	120	40	30					24	M6	10	LT139M6B
LT151X8.5	151	132	43	33	15.5	7	14	8.5	26			
	151	132	43	33					26	M6	10	LT151M6B
	200	180	50	39					28	M8	15	LT200M8B
LT260X10.5	260	235	54	42	21	10	17	10.5	32			
	260	235	54	42					32	M10	17	LT260M10B