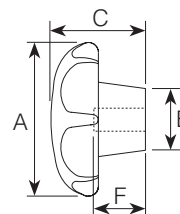


Phenolic



Phenolic

MALE							FEMALE
Plated Steel Insert Part No.	A	B	C	Thread	M Thread Length	F Thread Depth	Plated Steel Insert Part No.
S20M4X15	20	10	17	M4	15		
S25M5X10	25	12	16	M5	10	10.5	S25M5
S25M5X20	25	12	16	M5	20		
S25M5X30	25	12	16	M5	30		
S25M6X15	25	12	16	M6	15	13.5	S25M6
S32M5X25	32	14	20	M5	25		
S32M6X15	32	14	20	M6	15	13.5	S32M6
S32M6X30	32	14	20	M6	30		
S32M6X40	32	14	20	M6	40		
S32M8X15	32	14	20	M8	15		
S32M8X30	32	14	20	M8	30		
S40M6X30	40	16	25	M6	30	13.5	S40M6
S40M8X15	40	16	25	M8	15	10.5	S40M8
S40M8X20	40	16	25	M8	20		
S40M8X30	40	16	25	M8	30		
S40M8X40	40	16	25	M8	40		
S40M8X50	40	16	25	M8	50		
S40M8X85	40	16	25	M8	85		
	50	21	32	M6		13.5	S50M6
S50M8X15	50	21	32	M8	15	16	S50M8
S50M8X20	50	21	32	M8	20		
S50M8X30	50	21	32	M8	30		
S50M10X20	50	21	32	M10	20	21	S50M10
S50M10X30	50	21	32	M10	30		
S50M10X40	50	21	32	M10	40		
S50M10X50	50	21	32	M10	50		
S50M12X25	50	21	32	M12	25	25	S50M12
S63M8X20	63	23	40	M8	20		
	63	23	40	M10		21	S63M10
S63M12X25	63	23	40	M12	25	25	S63M12
S63M12X30	63	23	40	M12	30		
S63M12X40	63	23	40	M12	40		
S63M12X50	63	23	40	M12	50		
	80	34	48	M10		21	S80M10
S80M12X25	80	34	48	M12	25	25	S80M12
S80M12X40	80	34	48	M12	40		
	80	34	48	M16		30	S80M16